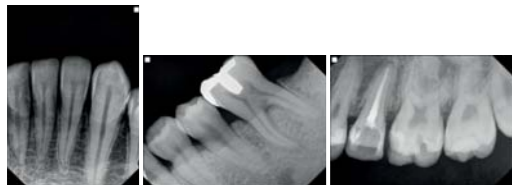
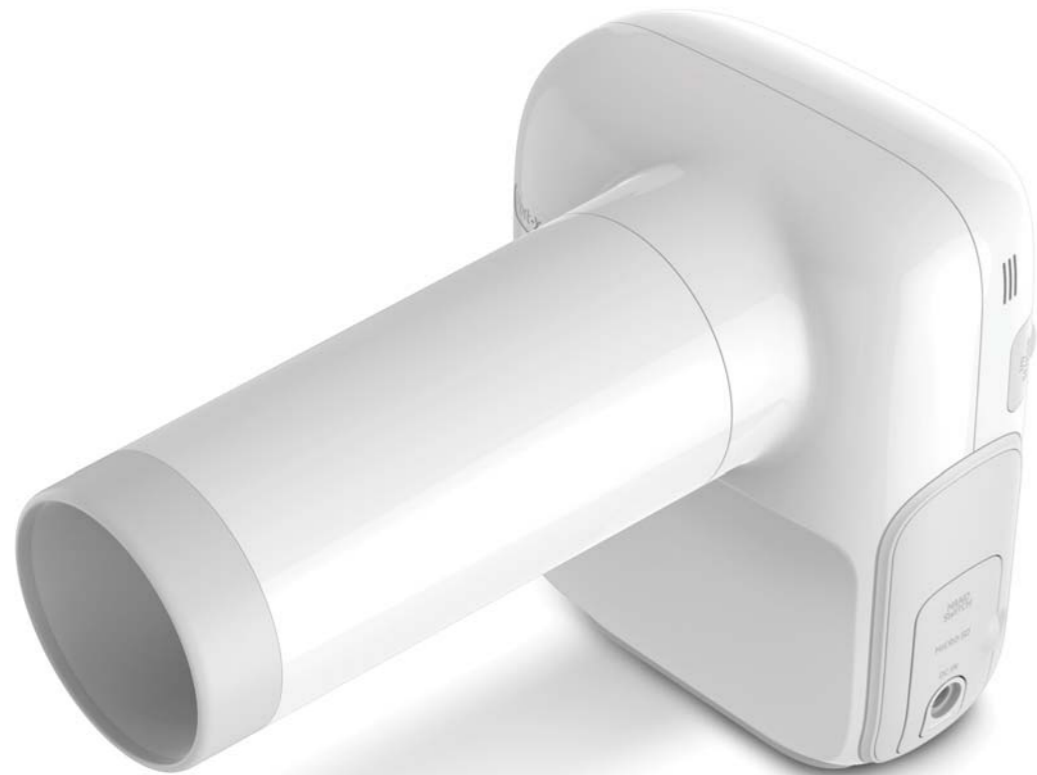


## Innovate Portability : PORT-X IV

All In One Portable X-ray



**1.5** <sup>kg</sup>  
Light weight

**0.4** <sup>mm</sup>  
Focal spot

**70** <sup>kV</sup>  
Tube voltage

**Wireless**  
Transfer and share X-ray image files

**LCD**  
Full color

**Battery**  
Li polymer  
22.2VDC, 1,000mAh

**Compact**  
170 (W) x 138 (D) x 155 (H) mm

**Twain**  
Interface



reddot award 2017

# Port-X IV

Portable Dental X-ray System



- Superior image quality
- Portable camera type
- Easy UI manipulation
- Compact size